

Airpot Coffee Brewer



Model CWTF APS with Airpot

(Server sold separately)

Dimensions: 23.6" H x 9" W x 18.5" D
(59.9cm H x 22.9cm W x 47cm D)

Features

Airpot Coffee Brewer

- Brews 4.2 to 7.5 gallons (15.9 to 28.4 liters) of perfect coffee per hour.
- Brews directly into 1.9 to 3.8 liter airpots.
- Convenient airpots keep coffee hot and fresh for hours.
- Airpots are easily transported to remote meeting rooms, breakfast bars, etc.
- Pourover model available (CW15-APS).
- Pourover feature included on automatic models.
- Faucet available on CWTF models only.
- Gourmet funnel model available for use with heavier throw weights of coffee.
- Digital timer enables users to make brew cycle adjustments from the front panel.
- International electrical configurations available.

Related Products

2.2 liter Push-Button Airpot

Product No. : 28696.6000
Capacity: 74 oz. (2.2 L)



2.5 liter Push-Button Airpot

Product No. : 13041.6000
Capacity: 84 oz. (2.5 L)

2.5 liter Lever-Action Airpot

Product No. : 32125.0000
Capacity: 84 oz. (2.5 L)



3.0 liter Lever-Action Airpot

Product No. : 32130.0000
Capacity: 102 oz. (3.0 L)

3.8 liter Lever-Action Airpot

Product No. : 36725.0000
Capacity: 129 oz. (3.8 L)

Easy Clear® EQ-17-TL

Product No. : 30200.1000
Dimensions:
12⁷/₁₆" H x 2¹/₂" W x 3" D
(31.6 cm H x 6.35 cm W x 7.62 cm D)



Easy Clear® ED-17-TL

Product No. : 30201.1001
Dimensions:
8¹/₄" H x 2⁵/₁₆" Dia.
(20.95 cm H x 5.87 cm Dia.)



Paper Filter Pack

Product No. : 20115.6000
Packed per case: 1,000
Dimensions:
4¹/₄" Base x 2³/₄" Sidewall
(10.8 cm Base x 6.98 cm Sidewall)



Model

CW APS

CWT APS

CWTF APS

Agency Listing



Dimensions & Specifications



Model	Product #	Volts	Amps	Tank Htr Watts	Total Watts	Capacity per hour	Cubic ft ³ /m ³	Weight lbs/kg	Cord Attached
CW15-APS*+	23001.6001	120	12.1	1450	1450	4.2 gal/15.9 L	5.1 / .14	33 / 15.0	Yes†
CW15-APS*++	23001.6000	120	12.1	1450	1450	4.2 gal/15.9 L	5.1 / .14	33 / 15.0	Yes†
CWT15-APS+	23001.6006	120	12.1	1450	1450	4.2 gal/15.9 L	5.1 / .14	35 / 15.9	Yes†
CWTF15-APS+	23001.6012	120	12.1	1450	1450	4.2 gal/15.9 L	5.1 / .14	38 / 17.2	Yes†
CWTF15-APS++	23001.6013	120	12.1	1450	1450	4.2 gal/15.9 L	5.1 / .14	38 / 17.2	Yes†
CWTF35-APS+	23001.6017	120/208-240	14.6	3500	3500	7.5 gal/28.42 L	5.1 / .14	38 / 17.2	No
CWTF35-APS++	23001.6016	120/208-240	14.6	3500	3500	7.5 gal/28.42 L	5.1 / .14	38 / 17.2	No

*Pourover model. †Power cord (NEMA 5-15P) 15 Amp-120V machine only.

+ Black trunk and Plastic Funnel. ++ Stainless Trunk and Plastic Funnel

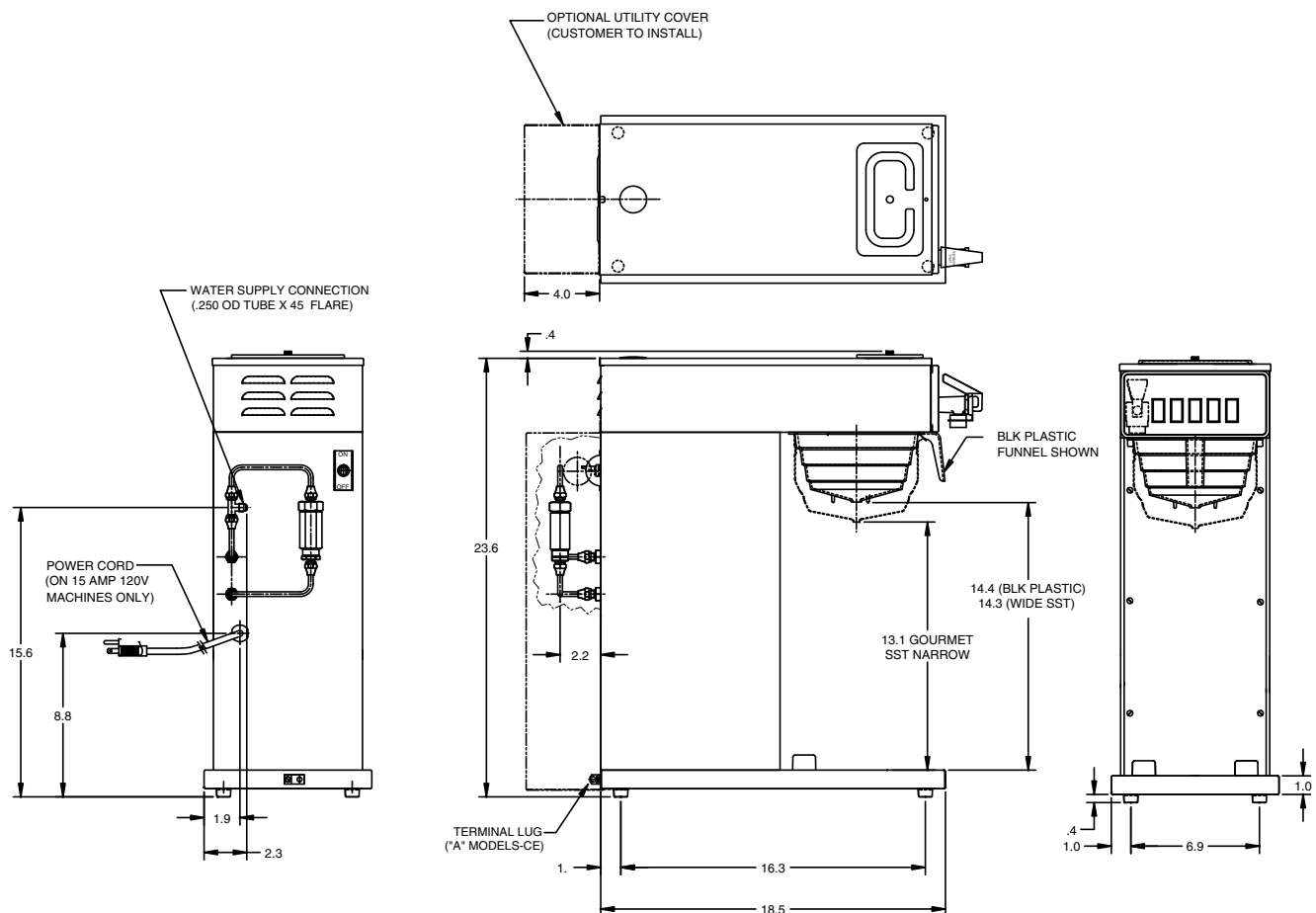
Brewing capacity: based upon incoming water temp of 60°F/15°C (140°F/60°C rise) per 1/2 gallon brew time of 4 minutes.

Models listed as 120/208V or 120/240V must be connected to 208V or 240V electrical service respectively. Please refer to the installation manual.

Capacity: Incoming water temp of 60°F (15.5°C)

Electrical: Requires 2-wires plus ground service rated 120/240V, single phase, 60Hz. Brewer is supplied with a cordset and a NEMA 5-15P plug. Receptacle is not included (NEMA 5-15P).

Plumbing: 20-90 psi (138-621 kPa). Supplied with 3/8" male flare fitting.



Bunn-O-Matic® Corporation of Canada • 280 Industrial Pkwy South, Aurora Ontario. L4G 3T9 • (905) 841-2866 • www.bunn.com

BUNN® practices continuous product research and improvement. We reserve the right to change specifications and product design without notice. Such revisions do not entitle the buyer to corresponding changes, improvements, additions or replacements for previously purchased equipment.

All dimensions shown in centimeters.